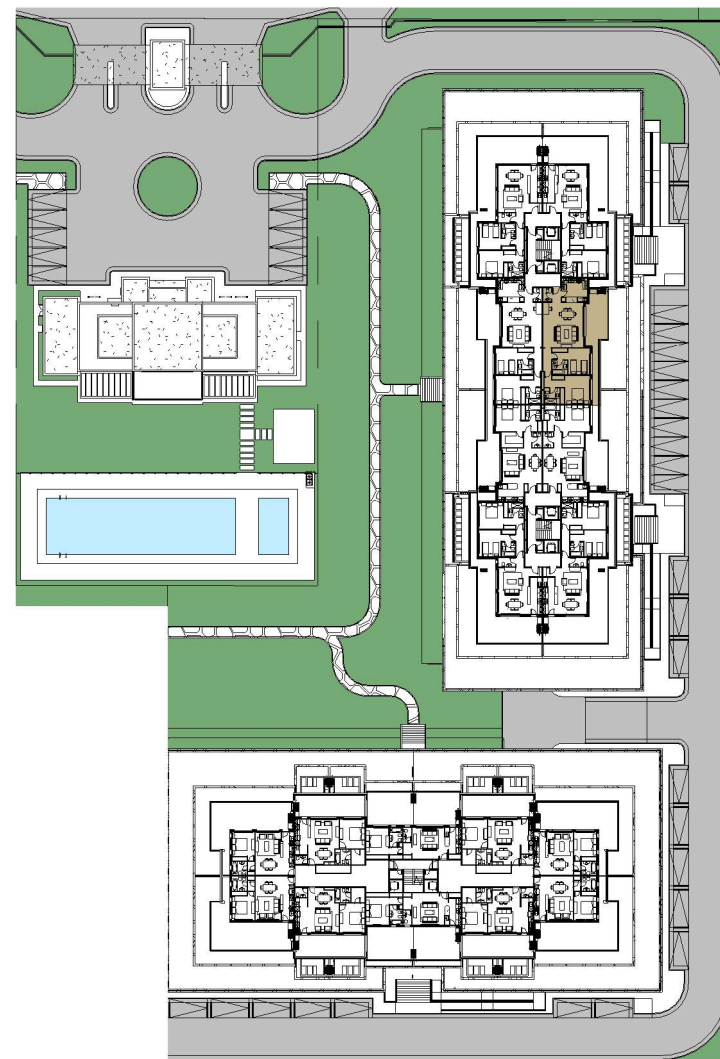


UNIDAD 306 - 2 DORMITORIOS

SUP. CUBIERTA	97.00 m2
SUP. EXPANSION SEMIC.	16.50 m2
SUP. EXPANSION DESC.	13.50 m2
SUP. COCHERA	12.50 m2



2

EDIFICIO 2 - U 306

1 : 125

1

UBICACION

1 : 1000